



4  2  2 

Contact Troy Holmes
0414 344 442

Type House

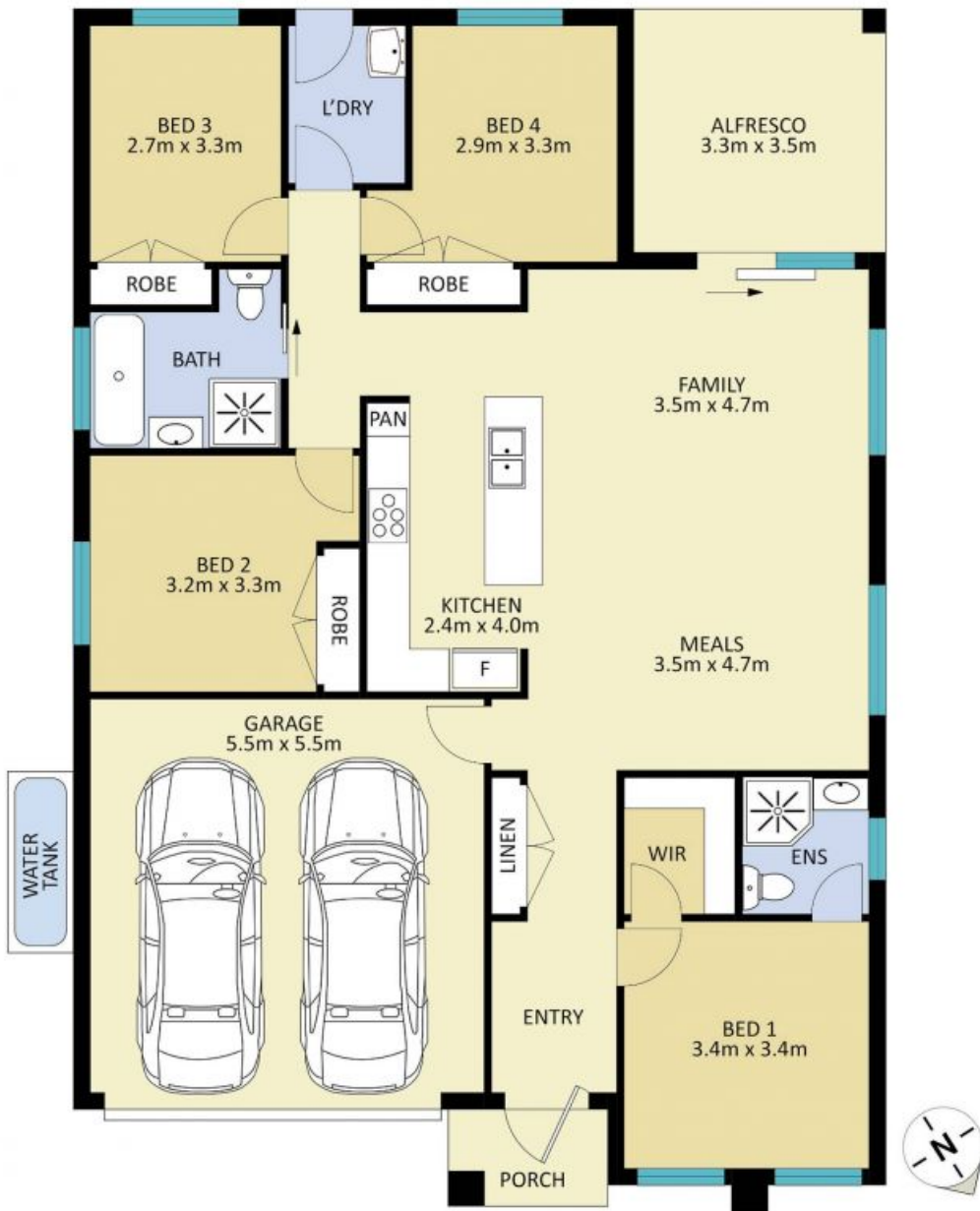
Sold Date 31/01/2020

Land 450 m2

Finished to a premium specification, this brand-new and low maintenance home embraces a deluxe way of life. Displaying elegantly proportioned, open-plan interiors, a sensational 900mm gas-equipped kitchen, with dishwasher, an open plan lounge and dining area plus alfresco entertaining, it exudes streamlined modern style across a carefree single level.

Quality comfort features including chic timber flooring to living areas as well as three-phase air conditioning for all-year-round heating and cooling. This home offers a contemporary living blend with tranquil environs, Located a short walk to the local shops and schools.

* Brand new 20sq single level Willoughby home, in quite location close to all amenities



15 Pickard Street, Thirlmere

Floor Plan Disclaimer: Site plans are intended as an approximate guide only. No representations or warranties of any nature are given or intended and any person or company using this information other than as a guide should always rely on their own enquiries.