



4  2  2 

Council Rates \$1,741/year (approx)

Contact Troy Holmes
0414 344 442

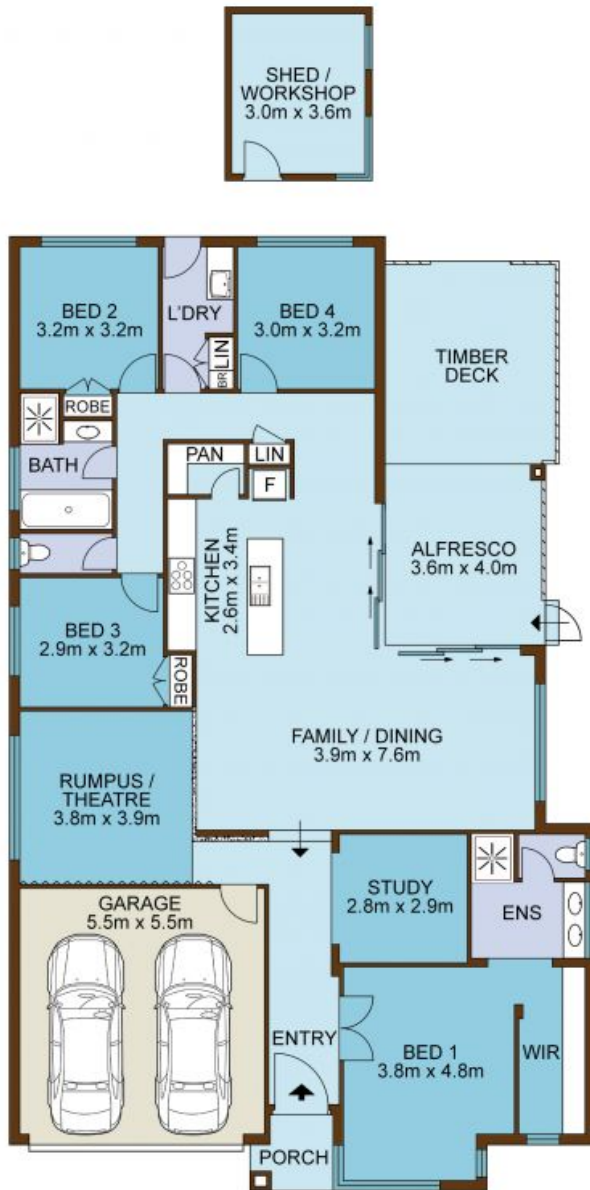
Type House

Sold Date 27/08/2020

Land 503.3 m2

Designed with meticulous attention to craft and detail, this sleek family home combines five-star style and relaxed comfort to spectacular effect. Flowing through a customised single-level floor plan boasting elevated ceiling heights throughout, generous in/outdoor living with corner-set stacker doors, a separate media room plus a cosy study or nursery, it exudes warmth and welcome and will easily flex and adapt with the changing needs of your household. Set opposite picturesque parkland, you'll appreciate the central convenience too, with Gledswood Hills Public School just a stroll away.

- Versatile layout features an open-plan family zone plus rumpus/theatre
- Stone pergola leads to deck, level backyard, second BBQ patio and shed
- Spacious master bedroom with couple's ensuite and walk-around robe



SITE PLAN

HOLMES
REAL ESTATE

61 Amberley Street, GLEDSWOOD HILLS

Not to scale • All measurements are approximate • Drawn for marketing purposes only