



6 3 2

**Contact** Troy Holmes  
0414 344 442

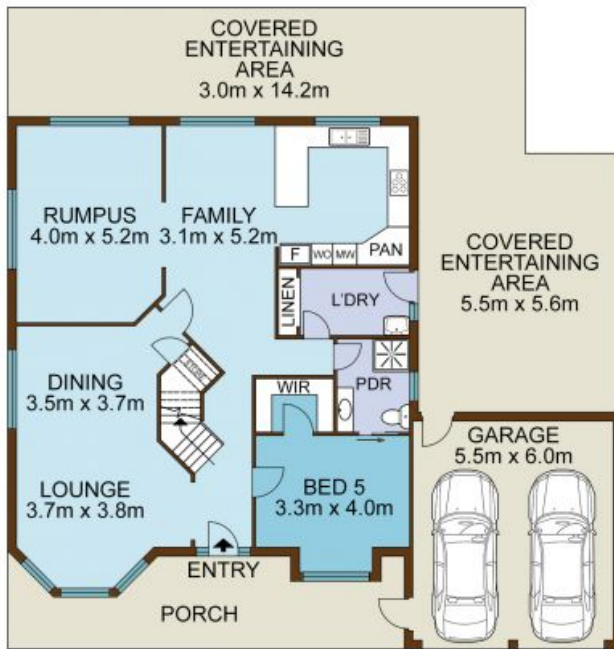
**Type** House

**Sold Date** 13/11/2020

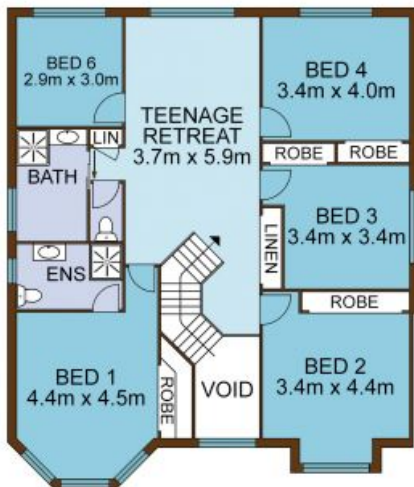
**Land** 800 m2

With its impressive volumes of space and emphasis on flexible living, this traditional-styled home exudes family appeal in a premium golfside locale. Luxuriously proportioned formal rooms, a sun-filled rumpus and an upstairs retreat are just the beginning ? outside, approx. 50sqm of patio entertaining takes centre stage in the generous north-east facing backyard, offered with fabulously flat, usable lawns and ample room for a pool. Replete with a downstairs guest suite, ducted air-conditioning and double garaging, this quality residence covers the full spectrum of classic comforts.

- Position-perfect just a stone's throw from golf course and club house
- Kitchen/family zone flows to excellent pergola and sundrenched yard
- Gas cooktop, corner pantry, dishwasher and breakfast bar



ENTRY LEVEL



UPPER LEVEL



SITE PLAN

**HOLMES**  
REAL ESTATE

5 Rossville Place, GLEN ALPINE

Not to scale • All measurements are approximate • Drawn for marketing purposes only