



5  2  2 

Contact Troy Holmes
0414 344 442

Type House

Sold Date 13/03/2021

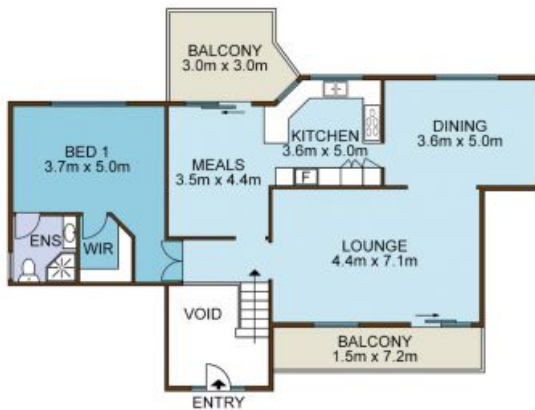
Land 850 m2

Elegant and spacious over cascading dual levels, this architect-designed home brings a luxury Hamptons touch to family-focused living. Perched high on the ridgeline with scenic westerly outlooks opening up to the rear, it offers a charismatic sanctuary complete with a full inside-and-out renovation, multiple retreat and entertaining zones, a brand-new kitchen with 40mm stone benchtops, and an expansive child-friendly backyard. Providing easy convenience on an 850sqm block, this fine property is ready to launch the next chapter of your household's executive lifestyle.

- Versatile floor plan with formal lounge, bar and two dining areas
- New front and back balconies, level yard with large all-seasons patio
- Quality Smeg and Asko stainless appliances, dishwasher, custom storage
- Fully tiled main bathroom features a sleek egg tub and separate shower



ENTRY LEVEL



UPPER LEVEL



SITE PLAN

HOLMES
REAL ESTATE

38 Glen Alpine Drive, GLEN ALPINE

Not to scale • All measurements are approximate • Drawn for marketing purposes only