



3 2 2

Contact Troy Holmes
0414 344 442

Type House

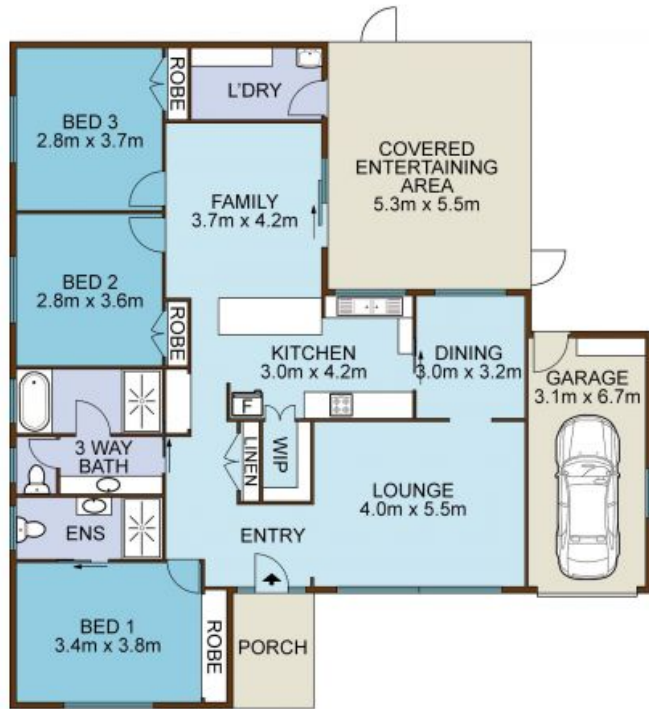
Sold Date 09/07/2021

Land 613.6 m2

Carparks 1

Benefiting from a spacious one-level floor plan and a sun-filled north aspect, this solid residence is built for classic family comfort. Warm and welcoming throughout, interiors present with two separate living areas, a well-designed kitchen with breakfast bench, and ducted reverse-cycle air conditioning for total climate control through all seasons. There's a variety of outdoor entertaining options, and potential to capture excellent district views with a second-storey extension (STCA) ? all in one of Bradbury's most sought-after streets, steps from transport links and parkland reserve.

- Desirable brick-veneer family home on a manageable 613sqm block
- Light and bright front lounge, separate family room plus dining
- Tranquil open and enclosed patios, mature fruit trees, easy-care yard
- Three-way main bathroom with tub plus shower; neat master ensuite



SITE PLAN

HOLMES
REAL ESTATE

32 Anembo Street, BRADBURY

Not to scale • All measurements are approximate • Drawn for marketing purposes only