



6  3  2 

**Contact** Troy Holmes  
0414 344 442

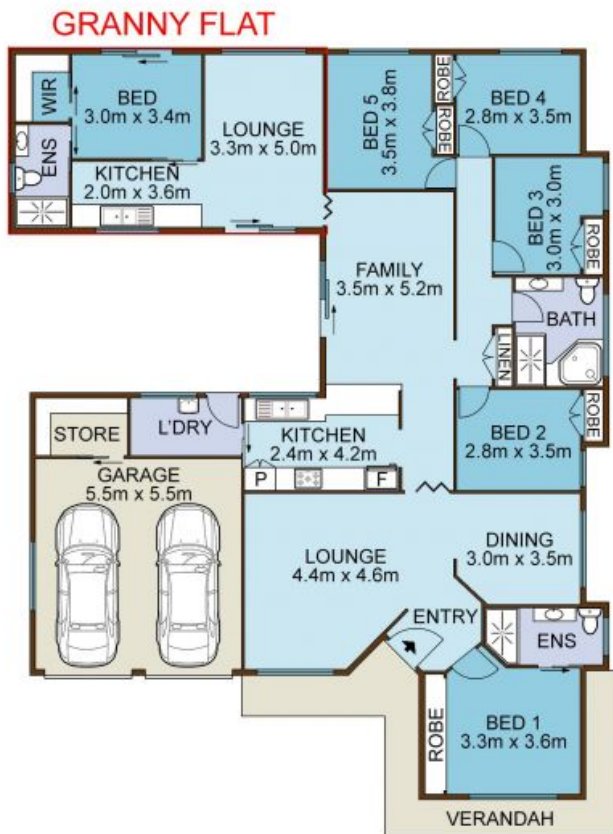
**Type** House

**Sold Date** 30/07/2021

**Land** 802 m2

Custom designed to accommodate two generations under one roof, this unique home offers a strongly flexible lifestyle in one of Glen Alpine's peaceful cul-de-sacs. Set high on its 802sqm parcel, it provides a handsome five-bedroom floor plan featuring a variety of living areas, a handcrafted timber kitchen, and modern flow to a sunny entertainers' courtyard. The separate one-bed flat is fully self-contained for the comfort and total privacy of in-laws or older teens. Leafy reserve aspects and prized day-to-day convenience complete this exceptional family retreat.

- Open-plan living zone, formal dining plus rumpus with cathedral ceiling
- Concrete alfresco, north-facing in-ground pool, manicured gardens
- Solidly built gas kitchen with dishwasher; main bathroom with corner spa
- Combustion fireplace, a/c units, garden shed, internal access to DLUG



SITE PLAN

**HOLMES**  
REAL ESTATE

7 Riversdale PlacE, GLEN ALPINE

Not to scale • All measurements are approximate • Drawn for marketing purposes only