



6  4  4 

Contact Troy Holmes
0414 344 442

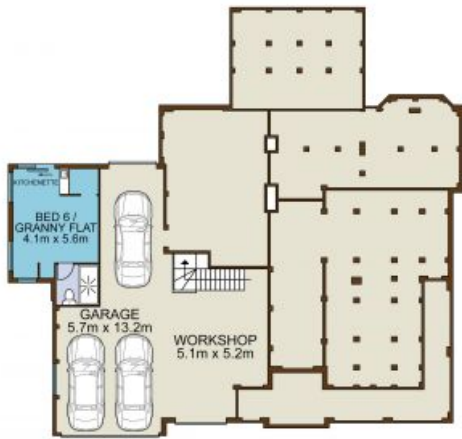
Type House

Sold Date 20/11/2021

Land 1124 m2

Poised in perfect splendour at the crest of its block, this breathtaking residence fuses vast family comfort with a classic architectural design. Boasting lavish volumes of space over dual levels, it provides a lifestyle retreat unsurpassed for executive impact complete with four versatile living areas plus a study, formal and casual dining zones, beautiful decked entertaining and a backyard paradise boasting a sundrenched saltwater pool. Nestled at the end of a tranquil cul-de-sac only moments from the golf course, its prized lifestyle setting is exquisitely well suited to an offering of this calibre.

- Grandly proportioned brick home built to a high-end specification
- Family lounge plus upstairs retreat, deluxe rumpus, dual dining options
- Resort-style pool with Travertine tiling and cabana, huge private yard
- Gracious master quarters boast a generous walk-in robe and ensuite



LOWER LEVEL



ENTRY LEVEL



UPPER LEVEL



SITE PLAN

HOLMES
REAL ESTATE

14 Beltana Place, GLEN ALPINE

Not to scale • All measurements are approximate • Drawn for marketing purposes only