



5  2  2 

Contact Troy Holmes
0414 344 442
Troy Holmes
0414 344 442

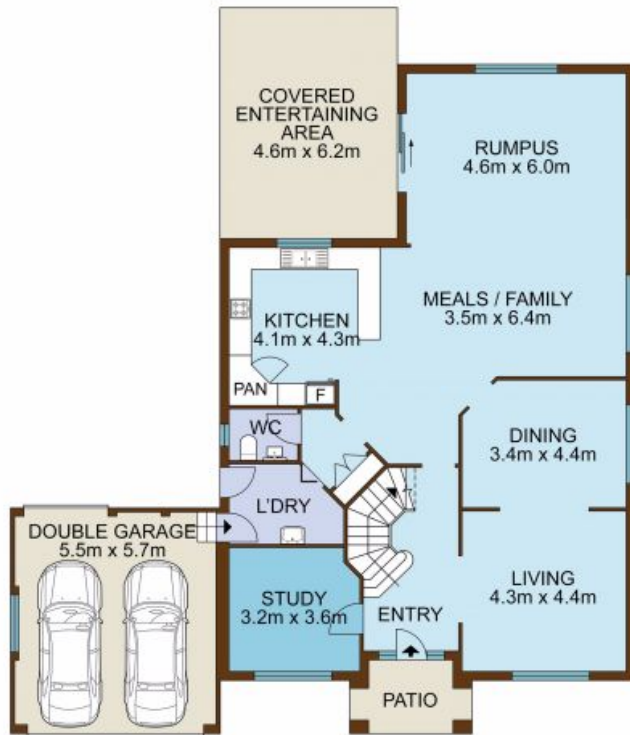
Type House

Sold Date 09/05/2022

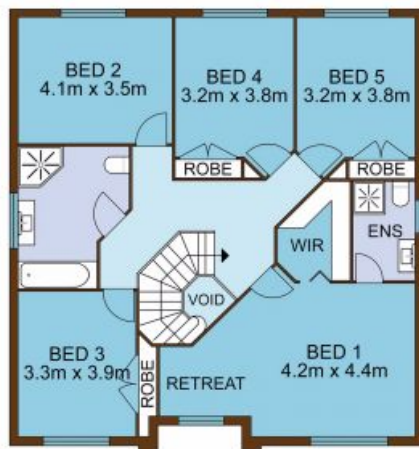
Land 800 m2

Supremely elegant on a well-tended 800sqm block, this impressive property doubles as a tranquil retreat and a fabulously functional family home. Adorned with sleek plantation shutters throughout, interiors boast multiple handsome living zones plus a separate study, a spacious Tasmanian Oak cook's kitchen with huge adjoining meals area, and views to the Blue Mountains from the top-floor bedroom windows. A selection of generous paved outdoor spaces are wonderfully adaptable for rest and play, while a peaceful high-side setting moments to Glen Alpine shops offers the perfect family-friendly lifestyle address.

- Formal lounge and dining with Red Ironbark hardwood timber floors throughout, separate family zone
- Gas fireplace with marble surround/hearth and timber mantle



ENTRY LEVEL



UPPER LEVEL



SITE PLAN

HOLMES
REAL ESTATE

44 Mountain View Avenue, GLEN ALPINE

Not to scale • All measurements are approximate • Drawn for marketing purposes only