

5  4  3 

**Contact** Troy Holmes  
0414 344 442

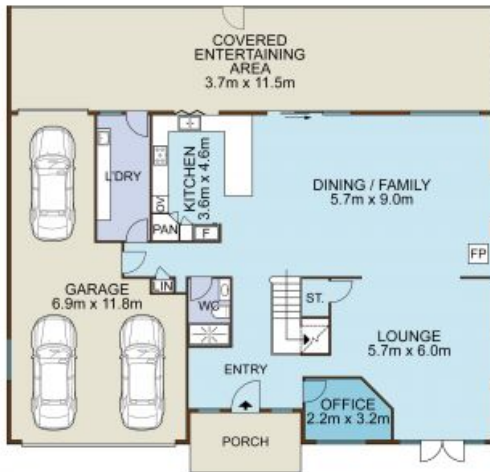
**Type** House

**Sold Date** 25/05/2023

**Land** 693 m2

With its expansive interior space, inviting outdoor areas and wealth of modern style, this dual-level family home is devoted to easy living. Built in 2014 and maintained with pride throughout, it offers a tranquil escape from the bustle ? boasting multiple lounges plus a study, a stunning top deck spanning the property's full width, and a private, leafy rear boundary on Heritage Park. There's also a gas-heated saltwater pool to enjoy, plus drive-through garaging to fit three cars ? not to mention a peaceful address in a highly desirable cul-de-sac minutes from schools and Macarthur Square.

- Quality design showcasing a beautiful, open floor plan downstairs.
- Formal lounge and dining plus meals, family room, huge teen retreat
- Fantastic dual all-seasons alfresco options, child-friendly backyard
- Cook's kitchen with 40mm stone benchtops and 900mm Bosch gas hob



# HOLMES

REAL ESTATE

19 Wylarah Close, GLEN ALPINE

Not to scale • All measurements are approximate • Drawn for marketing purposes only