



5  3  2 

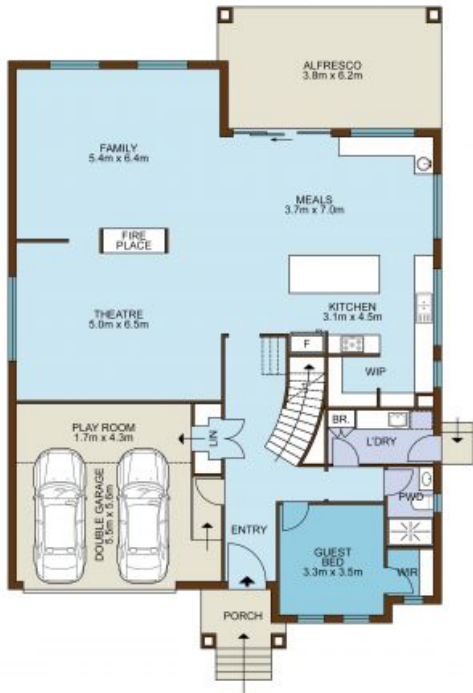
**Contact** Troy Holmes  
0414 344 442

**Type** House

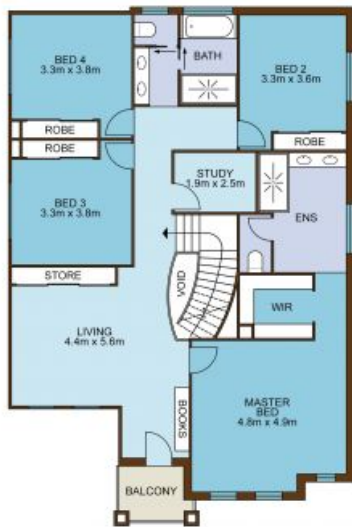
**Land** 550 m2

Poised at the suburb's highest point, with sweeping 270-degree north views over St Helens Park Reserve, this stunning home takes family living to a whole new level. A vision of practical, low-maintenance comfort, impressive space and designer flair, it exudes quality in every detail ? boasting two generous lounges plus a theatre, a gourmet kitchen with bespoke breakfast island, beautiful decked entertaining and breathtaking formal gardens front and rear. This sublime opportunity comes complete with ducted air, a grand master suite and a double garage, providing a glorious retreat from the outside world.

- Premium 2017 build presenting in excellent condition throughout
- Magnificent open floor plan, sleek rear flow to covered alfresco
- Light-filled kitchen with 900mm oven and gas hob, walk-in pantry



**ENTRY LEVEL**



**UPPER LEVEL**



**SITE PLAN**

**HOLMES**  
REAL ESTATE

**64 Heritage Heights Circuit, SAINT HELENS PARK**

Not to scale • All measurements are approximate • Drawn for marketing purposes only